

A photograph of the Hilton Conference Center in Gainesville, Florida, featuring a multi-story brick building with a prominent Hilton logo. The scene is framed by green foliage in the foreground and a clear blue sky.

Florida Workforce Summit 2007

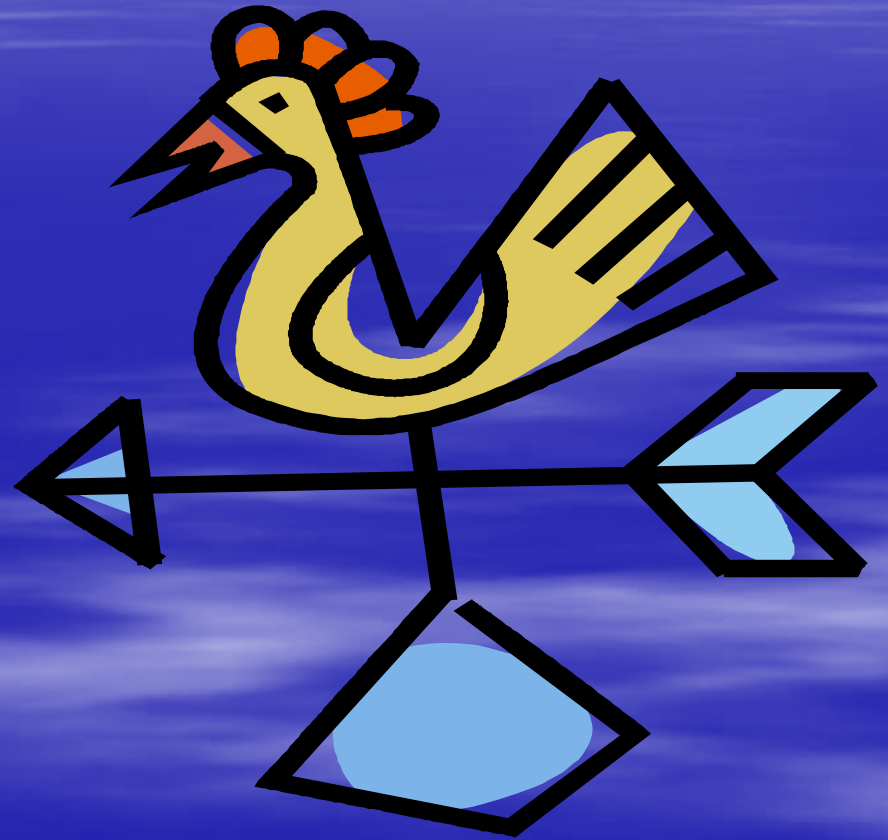
workforce
summit

2007 Hilton Conference Center Gainesville, FL



THE WINDS OF CHANGE

ARBOR WORKFORCE
INSTITUTE



Agenda

- New Leadership ... and Old
- WIA Reauthorization
- Money Still Talks
- What About DOL's Proposed Regs?
- Bigger Winds, 2008 Election and Beyond



The Senate Changed Too But a Tornado Hit the House



Committee on Education and Labor



Representative

GEORGE MILLER

Senior Democrat, Committee on Education and the Workforce

Seventh District of California

2205 Rayburn House Office Building
Washington, DC 20515

George.Miller@mail.house.gov



U.S. CONGRESSMAN

BUCK McKEON

25TH DISTRICT OF CALIFORNIA



Subcommittee on Higher Ed, Lifelong Learning and Competitiveness



Rubén Hinojosa
Texas 15th District



House Labor-H Appropriations Subcommittee



Welcome to Wisconsin's 7th Congressional District
Represented by Congressman
Dave Obey

The banner features a portrait of Congressman Dave Obey on the left, wearing glasses and a light blue shirt. The background is a stylized American flag with stars and stripes. The text is in a serif font, with 'Dave Obey' in a larger, bold font. A circular seal of the House of Representatives is visible in the background.



Jim Walsh

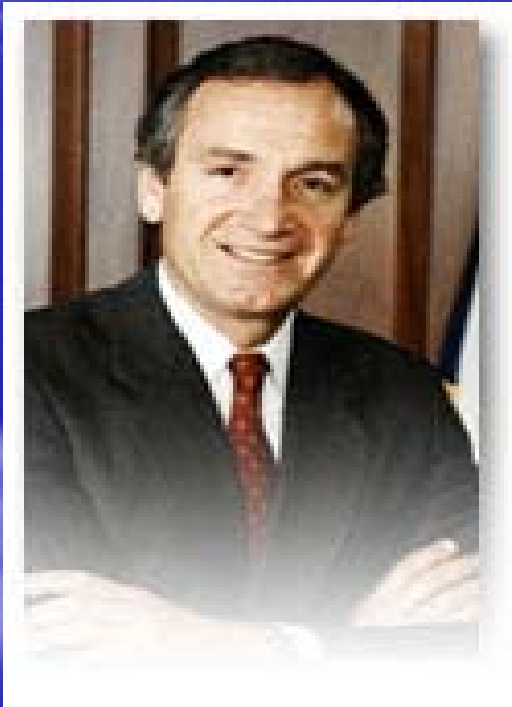
New York, 25th District

BEATLES CHANGE LEAD SINGERS: HELP

Edward Kennedy



Senate Appropriations Labor-H Subcommittee



Where is WIA, Waldo?

- Consolidation and/or Block Grants
- Faith-Based Providers
- State Versus Local Planning (or Regional)
- One-stop improvements



SET IN CONCRETE?

- More for Out-of-School Youth
- Local Workforce Areas Never Die
- WIBs Get Meaner or Just Leaner
- Incumbent Workers Jostle with Unemployed
- Business Services a Capital Idea
- The Whole is Less Than the Sum of its Parts: We Are What We Measure

Can Congress and ETA Agree on Anything?

- More Training
- Less Administration



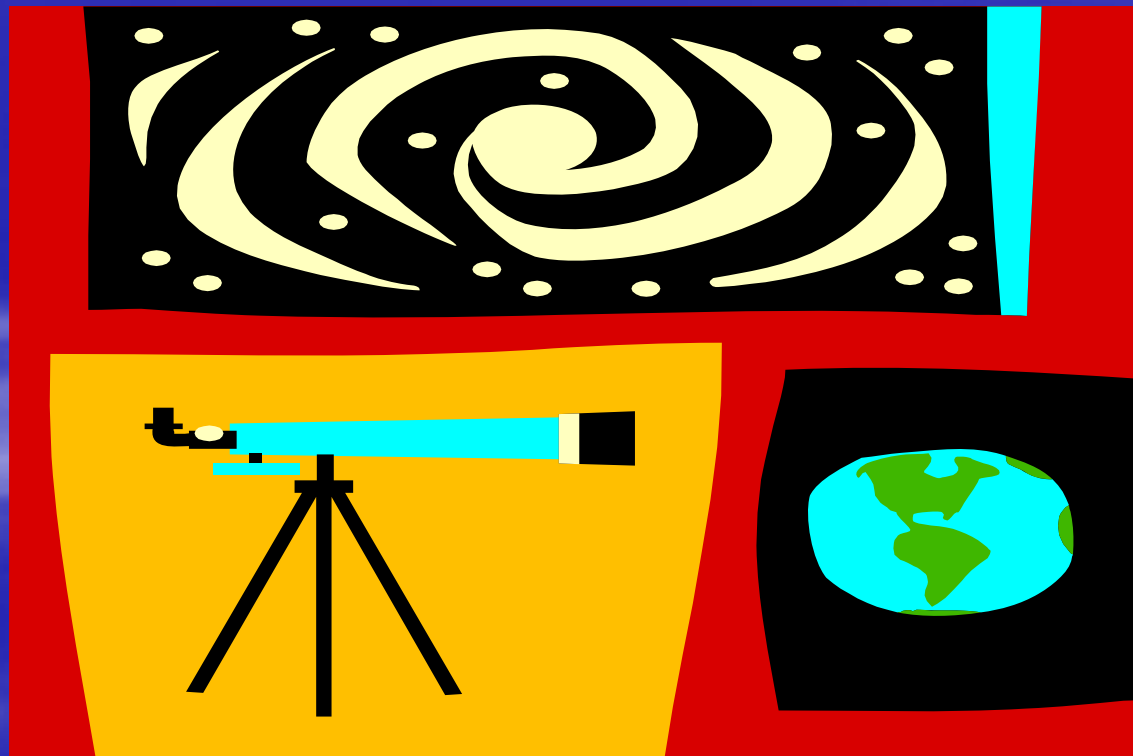
Earthquake or Sound and Fury?

- Wagner-Peyser's Future
- Career Advancement Accounts
- New Regulations.



Deficits ...

As far as the eye can see



- **National Defense**
- **Social Security**
- **Health Care**

	FY 06	FY 07 House Appropriations Committee Approved	FY 07 Senate Appropriations Committee Approved
WIA Adult	864	854	800
WIA Dislocated Worker			
Grants to States	1,190	1,193	1,193
National Reserve	282	158	158
Community College	125	125	125
TOTAL	1,597	1,476	1,476
WIA Youth	941	936	936
SCSEP (seniors)	432	420	432
Job Corps	1,608	1,523	1,629
Employment Service (state allotments)	716	689	689
Rescission		(325)	

FLORIDA WIA Funding

- Youth Allotments

Florida	-14%
All States	- 4.6%

- Adult Allotments

Florida	-13%
All States	- 3%

- DW Allotments

Florida	-11%
All States	+ 0.4%

How Will Major Forces Shape Workforce?

#1 Globalization

#2 Technology

#3 Demographics

Or These?

#4 Changing Impact of Economic Cycles on Labor

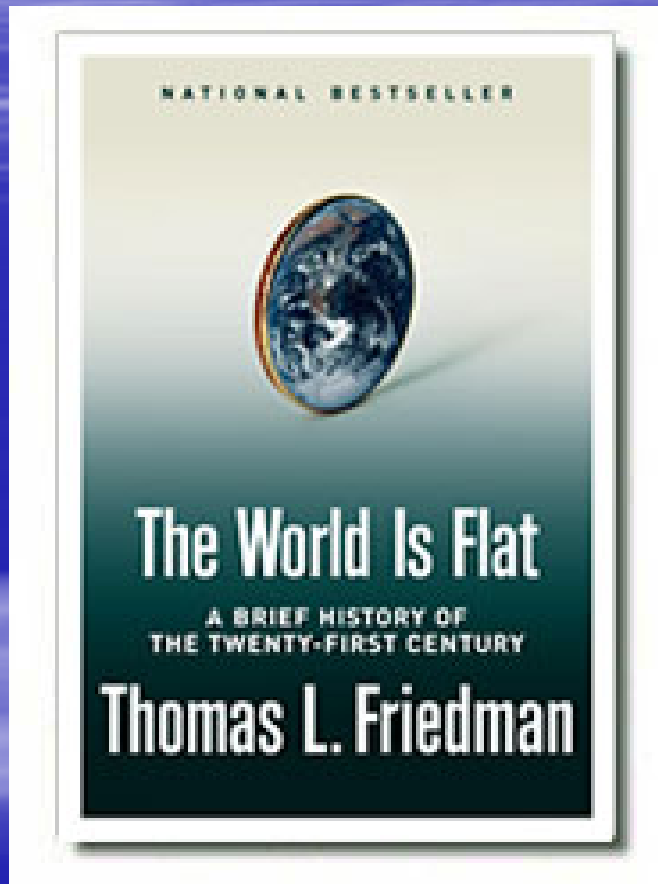
#5 Knowledge and Skills Impact on Wages

#6 Movement from Surplus Labor to Shortages

#1 Globalization



VS



TAKE THIS JOB AND SHIP IT

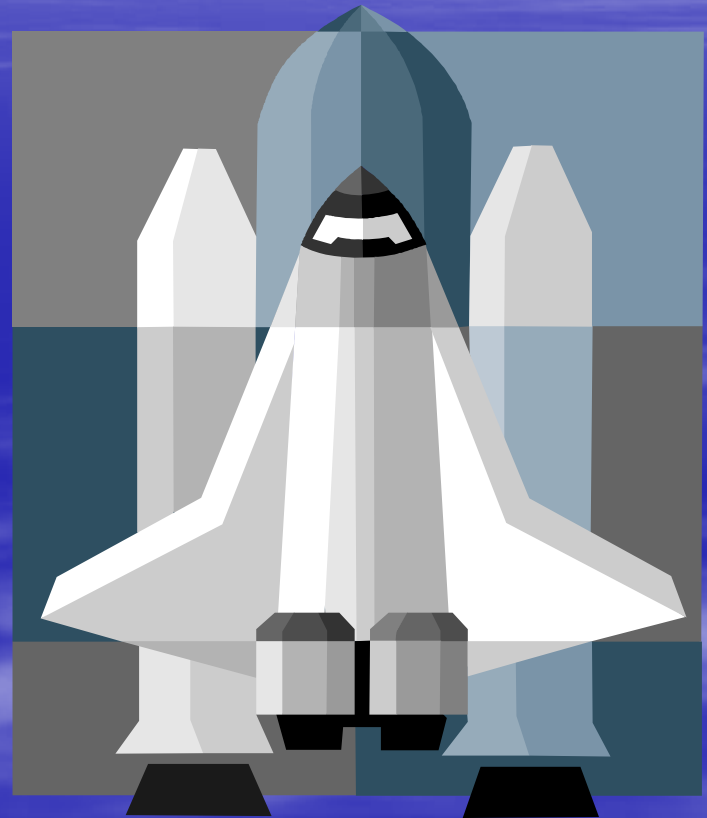


HOW CORPORATE
GREED AND
BRAIN DEAD POLITICS
ARE SELLING OUT
AMERICA

**SENATOR
BYRON L. DORGAN**

#2 TECHNOLOGY

- Telecommunications
- Distance Learning
- Assistive Technology
- Life Sciences
- Biotechnology
- Nanotechnology



Issues for Workforce

- Using Technology to Work Faster, Cheaper, More Effectively
- Education and Training So That Customers Can Take Advantage
- Working with Employers for On-Site Learning

#3 DEMOGRAPHICS

- Boomers
- Immigration
- No Child Left Behind
- Changes Outside U.S.

A Few Numbers

U.S.

2000 pop.= 284 M

2020 pop.= 338 M

World

2000 pop.= 6.1 B

2020 pop.= 7.5 B

Europe

2000 pop.= 728 M

2020 pop.= 715 M

Asia

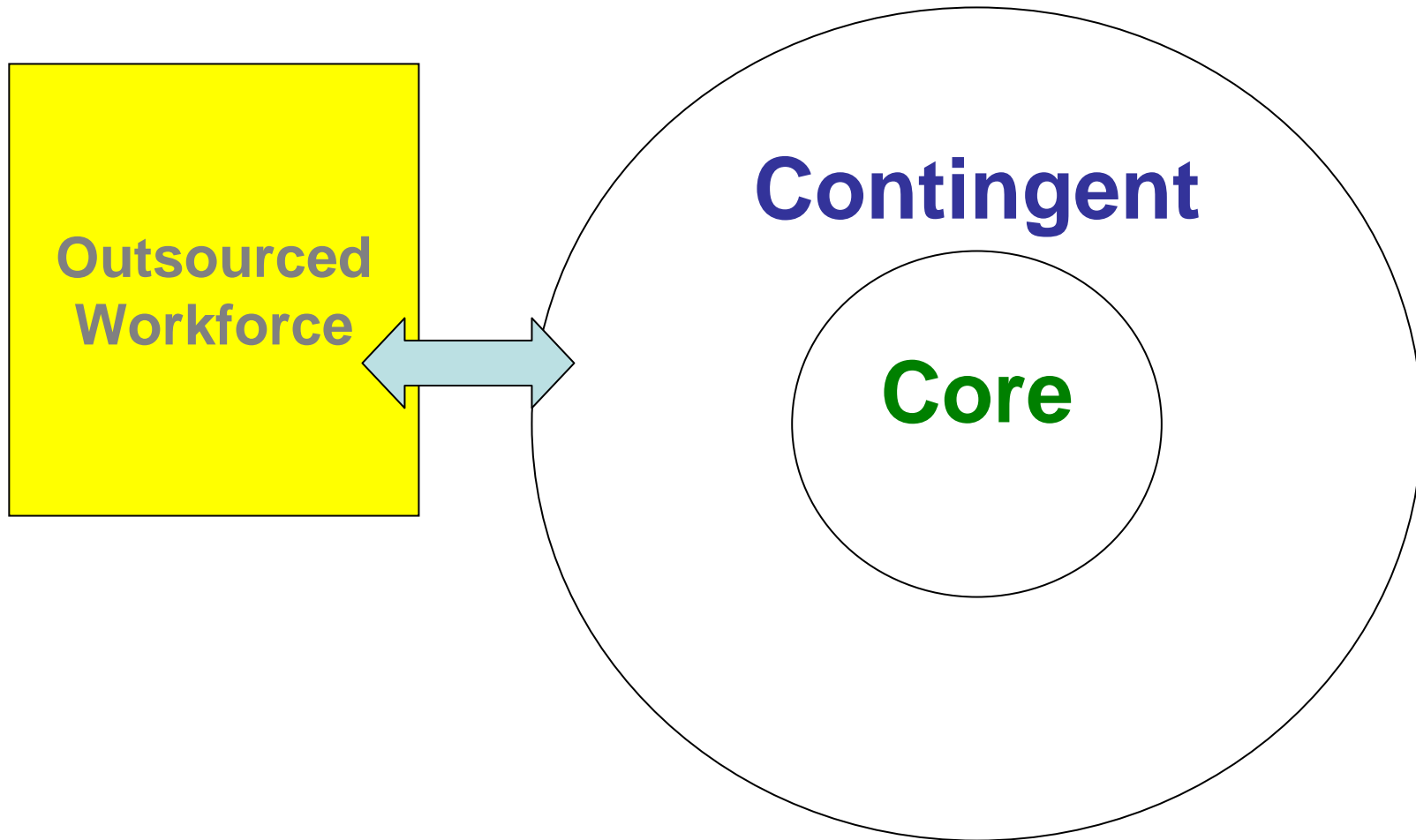
2000 pop.= 3.7 B

2020 pop.= 4.6 B

#4 Cyclical Market Becomes a Churning Job Market

- Layoffs But Not Recalls
- Who Do You Work For?
- Skills Upgrades, New Skills,
Career Ladders

Structure of Employment



Lifelong Learning

**STABLE
KNOWLEDGE
MORPHS TO
CONTINUOUS
LEARNING**



Agriculture, Manufacturing and Education

- Free K-12; Pay for Higher Education
- School Keeps People Out of Labor Force
- Pell Grants Used for Traditional Education
- UI Not for Education
- Trade Bills Training Not Integrated to Work

#6 LABOR EQUATION CHANGES

**A Century of
Labor Surplus
Gives Way to
Labor and
Skill Shortages**



SKILL SHORTAGES

- Dental school faculty – average age 60.3
- Government workers – 44% are 45 years +
- Skilled Machinists – average age 50
- Engineers and scientists – 52% over 50

Projected Skilled and Unskilled Worker Gap

	2010	2020
Skilled Worker Gap	5.3 million	14 million
Unskilled Worker Gap	1.7 million	7 million
Total Gap	7 million	21 million

A NEW FUNDING MODEL FOR WORKFORCE DEVELOPMENT?

Is UI outmoded?

*Would a wage-
based tax system
supporting
education and
training form a
better strategy in
the 21st century?*



Shape of the Future?

Work First, Gain Skills while working,
study at night, take adult ed classes, be
on the lookout for better jobs, register
your resume on-line, never retire

Issues for 2008

- Customer Choice (ITAs, Pell, CAAs) or Economic Priorities (OJT, business services, customized training)
- Promote certain providers (examples: faith-based, CBOs, unions), protect public employees, favor competitive bidding

Perceived Needs/Problems Drive Policy

- Target programs to incumbent workers, dislocated workers, low-wage workers/families, immigrants, people with barriers (poor, low education, disabilities, offenders, welfare recipients, etc.) or universal service
- Retired Boomers Drive New Views of Problem?